

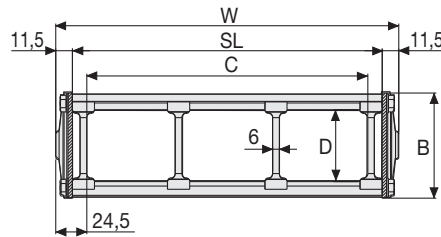
Serie Steel

35NC

Cable Chains in Bright Zinc Plated Steel

Inner height (D) 65 mm

Double share link construction.
Single-riquet fixing and standard large washer and nylon anti-friction disk to assure smooth and durable movement.
The strong Alu-covers are un-screwable from both sides.
Vertical and horizontal separator systems are available.



Separator

- Unassembled	Part.no ST3500F
- Assembled	Part.no ST3500FMC

Technical characteristics when self-supported

Speed	0,5 m/s
Acceleration	2 m/s ²

For higher requirements please consult our technical dept.

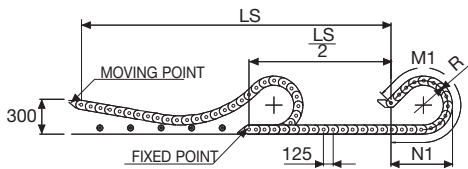
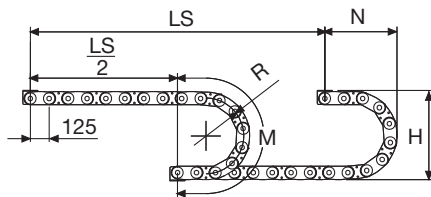
Aluminium Draw Plates with Separators in Nylon

W	B	C	D	R	Weight/m	Chain
mm	mm	mm	mm	mm	kg	Part Number
153	95	104	65	200-250-300-350-400-450-500-600	15,19	35NC104□□□*
203	95	154	65	200-250-300-350-400-450-500-600	16,22	35NC154□□□*
253	95	204	65	200-250-300-350-400-450-500-600	17,25	35NC204□□□*
303	95	254	65	200-250-300-350-400-450-500-600	18,28	35NC254□□□*
353	95	304	65	200-250-300-350-400-450-500-600	19,31	35NC304□□□*
453	95	404	65	200-250-300-350-400-450-500-600	21,37	35NC404□□□*
C+49	95	65	200-250-300-350-400-450-500-600		35NC□□□□□**

*Complete the code by inserting the value of the radius (R): Ex. 35NC154 [2] [5] [0]

**Complete the code by inserting the value of the quote C and the radius (R): Ex. 35NC [7] [2] [3] [2] [5] [0]

4



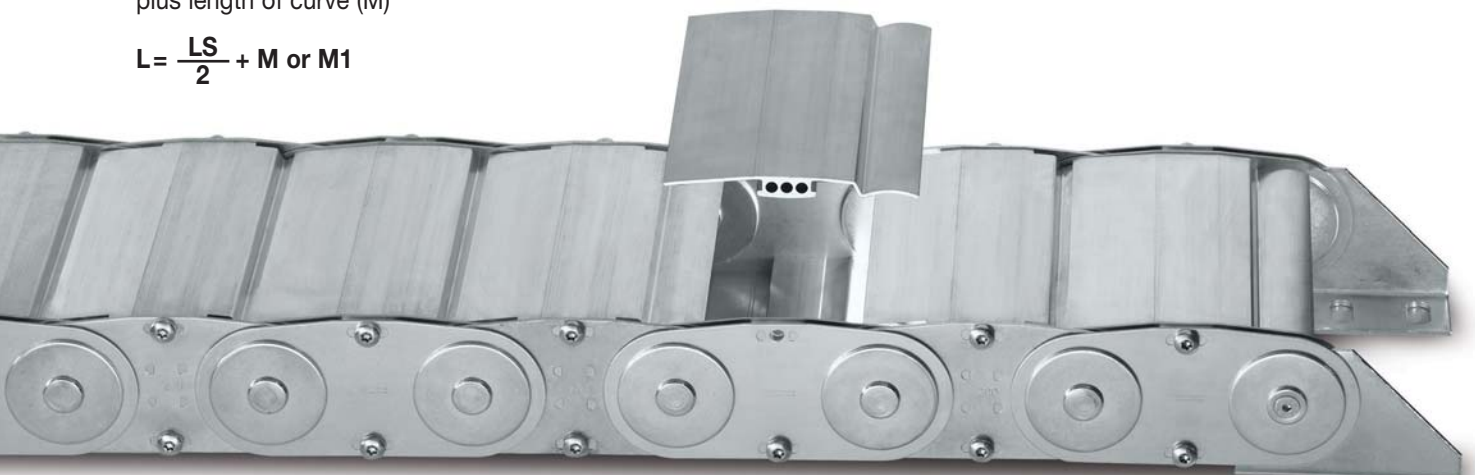
R	H*	N	M	N1	M1
mm	mm	mm	mm	mm	mm
200	512	375	880	1100	2360
250	612	425	1040	1310	2870
300	712	480	1200	1495	3335
350	812	525	1350	1670	3775
400	912	575	1510	1825	4190
450	1012	625	1670	1975	4595
500	1112	675	1825	2120	4985
600	1312	775	2140	2390	5750

* The height H should be increased by 10 mm/m approx. because of preload. In case of limitation to the available space, refer to the Technical Dptm.

Length of chain (L)

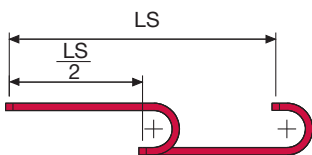
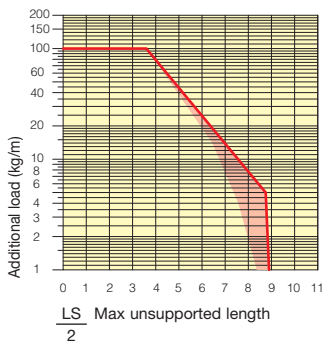
Half travel distance ($\frac{LS}{2}$)
plus length of curve (M)

$$L = \frac{LS}{2} + M \text{ or } M1$$



Self-Supporting Capacity Diagram

The maximum length of the self-supporting capacity ($\frac{LS}{2}$) in relationship to the weight of the cables and hoses contained per linear metre.



The red marking in the diagram area considers the difference of weight between various widths of chain.

For applications with $\frac{LS}{2}$ and weights not included in the area of the diagram showing self-supporting capacity, verify the possible use of support rollers (see page 30).

Bright Zinc Plated Steel End Brackets

The end brackets set, containing four steel plates screwed to the links allows the two ends of the chain to be attached to the equipment.

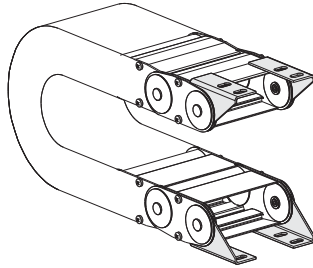
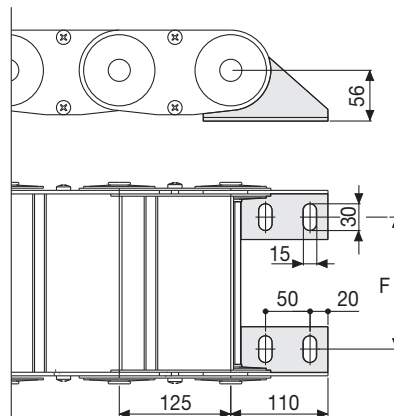


Fig. A
Chain fixed outside the radius. (Fig A)



Chain Type	F mm
35NC104	80
35NC154	130
35NC204	180
35NC254	230
35NC304	280
35NC404	380

Special widths F=W-76

Bright Zinc Plated Steel Type Part Numbers

Chain Type	End Brackets Set
35C...	A3500NCKM □**

Chain Type	End Brackets Set
35C...	A3500NCK

** 1=Pos.1; 2=Pos.2; 3=Pos.3
See end brackets mounting variations page 31.

Serie Steel

35NC Cable Chain in Bright Zinc Plated Steel



Suitable to long travel distance.
See page 215



For further information please
consult Brevetti Stendalto's
Technical Office